



— *Unlocking* —

HUMAN POTENTIAL

2015 Impact Report

FROM THE PRESIDENT & CEO

Unlocking human potential! Lutheran Family Services of Nebraska staff and volunteers strive to do this every day.

LFS is on the front lines of human care - strengthening families, welcoming newcomers and healing minds. This work builds better and brighter futures for those we serve, and it is delivered with excellence!

This year brings new facilities and expanded services to eastern Nebraska.

In Lincoln, our new footprint at 2301 "O" Street includes children services, behavioral health, community services to new populations and the Health 360 Integrated Care Clinic. Health 360, a partnership of LFS and People's Health Center, integrates mental health, substance use and primary care services to produce the best outcomes for the people of Lincoln. The clinic includes an on-site pharmacy and dental care. We anticipate 3,500 client visits in 2016!

As the largest refugee resettlement organization in Nebraska, LFS continues to resettle and support families fleeing the horrors of war. We expect the number of refugees coming to Nebraska to increase over the next several years as the world experiences the worst refugee crisis since World War II. In Fiscal Year 2016, we are prepared to welcome over 900 refugees. This includes individuals and their families who served alongside U.S. Armed Forces in Iraq and Afghanistan.

Since 1892, with the founding of two orphanages in Fremont and Omaha, the LFS history of service reflects the changing human care needs in our communities. As we move forward, we will continue to grow to meet these needs.

We invite you to join us as we prepare to celebrate 125 years of service in 2017.

Thank you for joining us in our vision of safety, hope and well-being for all people.

Many blessings to you and yours,

RUTH HENRICHS
PRESIDENT & CEO



MISSION

Lutheran Family Services expresses God's love for all people by providing quality human care services that build and strengthen individual, family and community life.

VISION

Safety, Hope and Well-Being for All People.

LOCATIONS



3,761 served



CHILDREN SERVICES

Strengthening families
and restoring safe
and happy childhoods
through a continuum
of care from prenatal to
adulthood.

STRENGTHEN



692

Children's Behavioral
Health clients



1,885

People served at the
Centers for Healthy Families



289

Children served by RSafe®, trauma treatment and therapeutic support for
children and families impacted by child sexual abuse



213

Adoptive families served
through Right Turn®



183

Children served through
62 foster care homes

Thank You from Amanda

Served through the Pottawattamie County Center for Healthy Families®

I needed help, more importantly I needed encouragement. I had three children and was leaving a bad relationship. There were months that I had challenges getting diapers for my kids or getting through the stress of being a single parent.

The Young Families Incentive Program made becoming a better parent rewarding. I was empowered to be the best mom I could be and received the support I needed.

In December, I graduated with a degree in criminal justice! I don't think I could have done it without you.

Thank you from the bottom of my heart for everything you have helped me with these last few years. I will always be grateful to you.

*Love
Amanda*



*Amanda with her
three children*

ENDING



2,873

People assisted by the
International Center of
the Heartland



783

Refugees welcomed from
11 countries



1,013

Employment support services provided through Employment First and
Refugee Education & Employment Program



1,096

Immigration Legal Services
cases and 564 initial legal
consultations



50,108

Hours served by AmeriCorps
members serving refugees,
at-risk youth and veterans

Thank You from Oo Meh's Parents

Served through the International Center of the Heartland

We came to Nebraska with a couple of suitcases and our two children. It was all we had after 12 years in a Thailand refugee camp.

After being resettled by LFS, we visited the International Center of the Heartland. Courtney, our case manager, took a special interest in helping our daughter Oo. She helped us navigate the complex health care system. Courtney connected us to a physical therapist, a neurologist, teachers and other caregivers at Oo's school (for the physically disabled).

In the camp, Oo couldn't take care of herself and didn't go to school because no one thought she could learn. Now, she moves around without our help and uses her own self-propelled wheelchair. She's even getting ready to be transferred to a mainstream school.

We are very grateful and thankful to LFS for seeing the potential in our daughter!



Oo Meh

KLAW MEH NA REH

Klaw Meh and Na Reh

6,771 served



COMMUNITY SERVICES

Welcoming
and providing
comprehensive services
to those seeking refuge
from oppression and
persecution.

WELCOMING

7,853 served



BEHAVIORAL HEALTH

Healing hearts and
minds through cutting-
edge trauma therapy,
effective substance
use treatment and
integrated care services.

HEALING



3,685

Clients enrolled in mental health programs



1,874

Substance Use Treatment clients



410

Crisis Response calls from Douglas, Washington and Dodge county law enforcement, four area homeless shelters and the Nebraska Family Helpline



879

Active military, veterans and loved ones served through LFS At Ease



1,005

Severe and Persistent Mental Illness (SPMI) clients served by Community Support programs

Thank You from Bradley

Served through LFS At Ease

For 40 years after leaving the military, I have struggled with addiction. My life seemed to be headed on a downward spiral. When the Douglas County Corrections Center created a veterans housing unit, I was one of the first to enter. LFS At Ease was one of the first to help me.

You not only gave me hope, but also the tools to help me be the man I am today. At your direction, I am now certified to provide peer support. I plan to serve those who have served our country and support them the way you supported me. I am again proud, inspired and motivated, just as I was the day I pledged allegiance to my country.

Thank you for everything.

Bradley



FAST FACTS

Health 360

A Partnership of
Lutheran Family Services of Nebraska
and People's Health Center

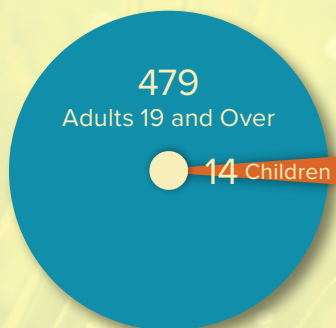
The integration of mental health, substance use and primary care services produces the best outcome and proves the most effective approach to caring for people with multiple healthcare needs. *(Substance Abuse and Mental Health Services Administration)*



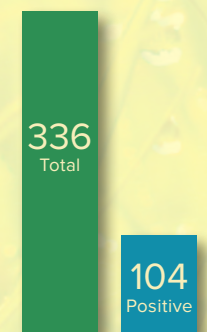
2,037 client visits at the Health 360 Integrated Care Clinic



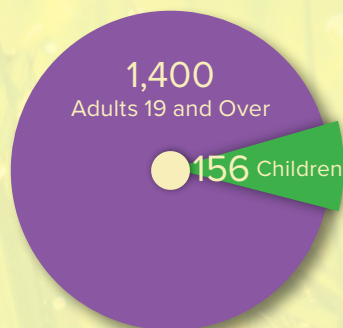
Behavioral
Health Visits



Depression
Screenings



Medical
Health Visits





16,339 volunteer service hours



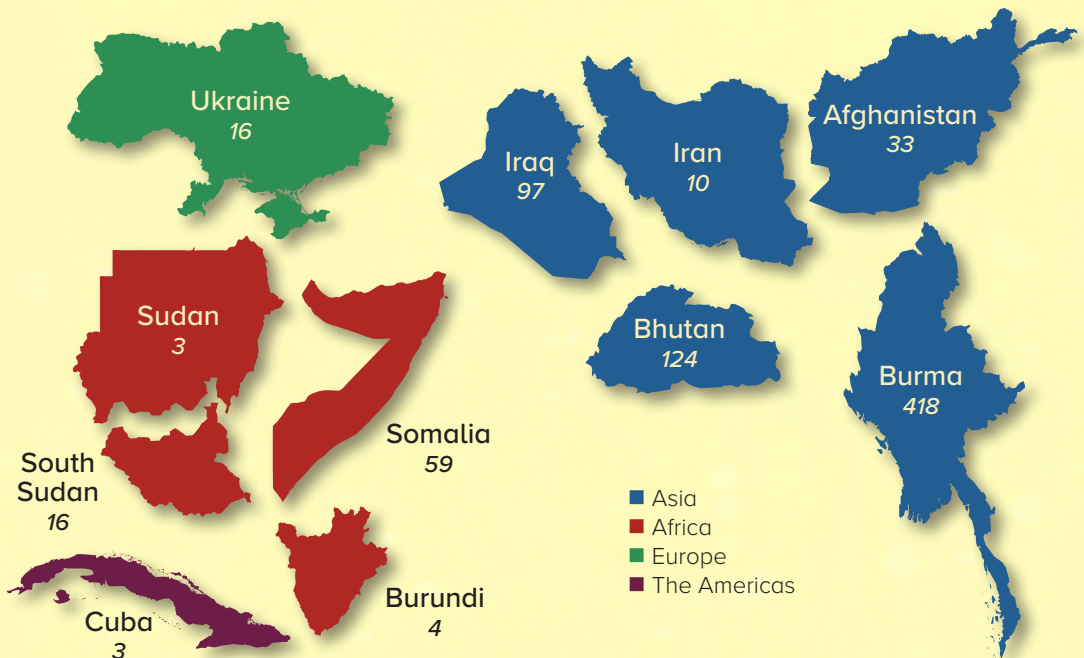
96%
LFS client
satisfaction



GLOBAL LANGUAGE
SOLUTIONS

3,110 interpretation requests
serving 1,188 Limited English
Proficiency (LEP) individuals

Homeland and Number of Refugees Resettled by LFS



PROGRAMS



Children Services

Prevention & Early Intervention

Centers for Healthy Families
(North Omaha, Pottawattamie County and Fremont)

Early Childhood Home Visitation

Learning Community of Douglas and Sarpy Counties Family Liaison Program

Permanency & Well-Being

Adoption

Adoption Search

Foster Care

In-Home Services

Maternal Health Care

Permanent Connections

Pregnancy Counseling

Right Turn® *(Help for post-adoptive and guardianship parents)*

Children's Behavioral Health

Children & Youth Mental Health

KidSquad

RSafe® *(Sexual abuse treatment)*



Community Services

New Populations

Employment First

Global Language Solutions

Immigration Legal Services

International Center of the Heartland

Refugee Education and Employment

Refugee Reception and Placement

Refugee Support

AmeriCorps

Nebraska Economic Opportunity Corps

Veteran-Student Support Corps

VetSuccess

VISTA *(Volunteers in Service to America)*



Behavioral Health

Adult Behavioral Health

Community Support

Crisis Response

Josiah Place *(Housing for those with severe and persistent mental illness)*

Juvenile and Young Adult Pretrial Diversion

LFS At Ease *(For active military, veterans and their loved ones)*

Medication Management

Outpatient Mental Health

Partners in Empowerment and Recovery (PIER)

Substance Use Treatment

Targeted Adult Service

Coordination (TASC)

Urgent Care

Integrated Care

Health 360 Integrated Care

Clinic *(A partnership with People's Health Center in Lincoln)*

Integrated Care Partnerships

Learn more about these programs at LFSneb.org

UNLOCK HUMAN POTENTIAL

Donate



Cash Gifts



Bequests or
Estate Gifts



Gifts of Stock



Employer
Matching Gifts



Gifts of Grain

Call (402) 591-5063, email development@LFSneb.org, or donate online at LFSneb.org

Act



Organize your colleagues
or congregation to
sponsor a refugee family



Mentor a child
aging out of foster
care or a refugee



Donate new
items for children
under five

Call (402) 978-5665 or email volunteer@LFSneb.org

Engage



LFSNEB



@LFSofNebraska



info@LFSneb.org



LFSNEB



LFSNEB

Automatic Support



smile.amazon.com



[bakersplus.com/
communityrewards](https://bakersplus.com/communityrewards)



THRIVENT
FINANCIAL

thrivent.com/choice



proseeds

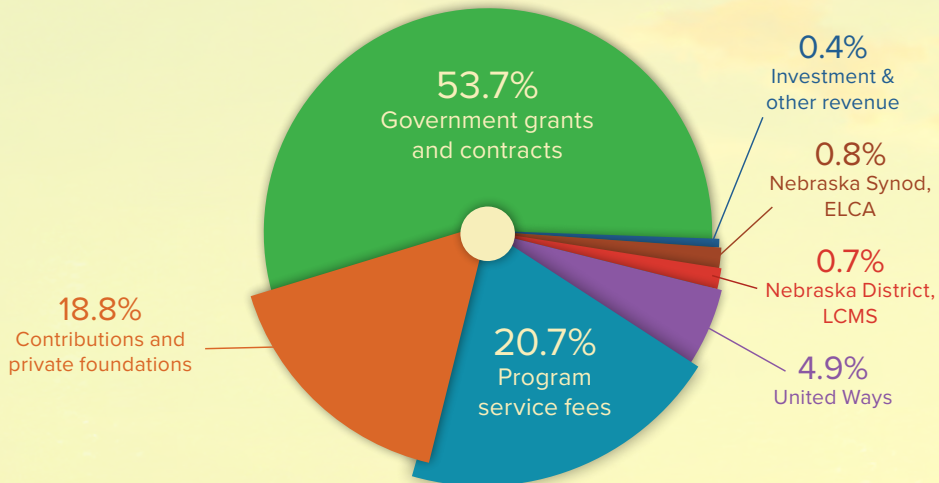
giveproseeds.com

Sign up with our giving partners to automatically donate a percentage
of your purchases or investments to LFS at no cost to you!

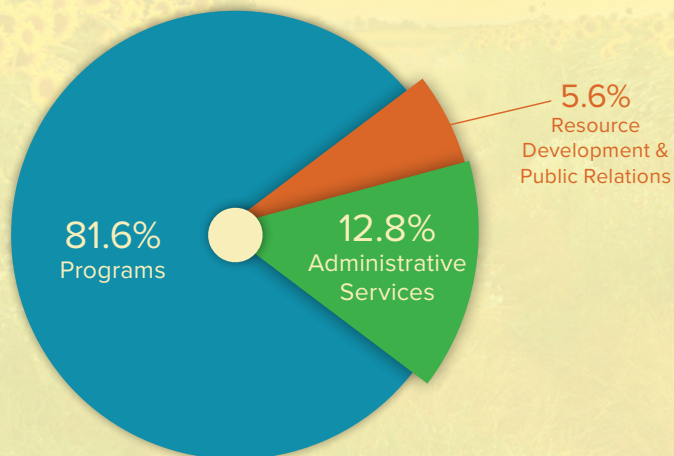
FINANCIAL SNAPSHOT

Lutheran Family Services of Nebraska, Inc.* for the year ended December 31, 2015.

Support & Revenue - \$22,968,715



Expenditures - \$22,578,894



* Lutheran Family Services of Nebraska, Inc. has affiliate corporations including Lutheran Family Services Foundation, Inc., Omaha Church Center, Inc. (the property holding and building management affiliate) and LFS 25th Avenue Apartments, LLC, with total combined net assets of \$12,865,565 including investment and capital assets. In 2015, net assets for these affiliates increased by \$2,462,071.

2016 LEADERSHIP

LUTHERAN FAMILY SERVICES OF NEBRASKA, INC. BOARD OF DIRECTORS

Bradley D. HoltorfChair	Anthony Anderson
Stuart J. DornanVice Chair	Connie Duncan
Kim SuchaTreasurer & Chair, Finance	Gwendolynn F. Edwards
Andrew MasseyChair, Governance	Alicia Hoffman
Debbie FraserChair, Program	Susan Lewis
Linda DaughertyExecutive Committee Member at Large	Rev. Brian D. Maas (<i>Bishop, Nebraska Synod, ELCA</i>)
Ruth HenrichsSecretary	Christina Marroquin
	Dr. Mary Reckmeyer
	Rev. Richard Snow (<i>President, Nebraska District, LCMS</i>)
	Christopher Tonniges

LUTHERAN FAMILY SERVICES FOUNDATION, INC. BOARD OF DIRECTORS

Terry J. McClain <i>Chair</i>	Peter W. Zandbergen <i>Treasurer</i>	Phyllis Choat Andrew Morrow Larry Novicki
Greg Schilling <i>Vice Chair</i>	Parker Schenken <i>Secretary</i>	

OMAHA CHURCH CENTER, INC. BOARD OF DIRECTORS

The property holding and building management affiliate of Lutheran Family Services of Nebraska, Inc.

Edwin D. Schoening <i>Chair</i>	Herb Barelman Stuart J. Dornan Bradley D. Holtorf	Kim Sucha Ruth Henrichs
------------------------------------	---	----------------------------

JOSIAH PLACE, INC. BOARD OF DIRECTORS

North Platte housing for those with severe and persistent mental illness

Craig Stirtz <i>Chair</i>	Richard Henrichs <i>Treasurer</i>	Cindy Nieves
Edwin D. Schoening <i>Vice Chair</i>	Daniel S. Mauk <i>Secretary</i>	

LFS EXECUTIVE TEAM

Ruth Henrichs <i>President & CEO</i>	Joe Acierno <i>Vice President of Legal and Support Services</i>	Ruth Henneman <i>Vice President of Development</i>
Todd Reckling <i>Vice President of Program</i>		Richard Henrichs <i>Vice President of Finance</i>

FOREVER FAMILIES GUILD

Nancy K. Johnson <i>President</i>	Dana Payne <i>Vice President</i>	Terri Wasmoen <i>Secretary</i>
Alicia Hoffman <i>LFS Board of Directors Guild Liaison</i>	Teri Krohn <i>Advisor</i>	Cheryl Murray <i>LFS Development Officer & Guild Liaison</i>

Lutheran Family Services *of Nebraska, Inc.*

124 South 24th Street · Suite 230 · Omaha, NE 68102
(402) 342-7038 · LFSneb.org



Lutheran Church - Missouri Synod,
Nebraska District Recognized
Service Organization



Evangelical Lutheran Church
in America Affiliated Social
Ministry Organization



United Way
Agency



Lutheran Immigration &
Refugee Service Affiliate



Church World Service
Affiliate



Lutheran Services in
America Member

