

 **Lutheran Family Services**
of Nebraska, Inc.

2010 Annual Report



It all began with children...



2

*In 1892 young orphans needed loving homes.
Lutheran pastors and their church members
stepped up with safe refuge.*

3

*This mission continues today....with services that
not only help children find homes, but also...*



4

*...help children of servicemen
and women cope with the stress of
repeated deployments...*



5

*...help children heal wounds of
trauma, including sexual abuse...*



6

*...help adults and teens to
parent with love and patience...*

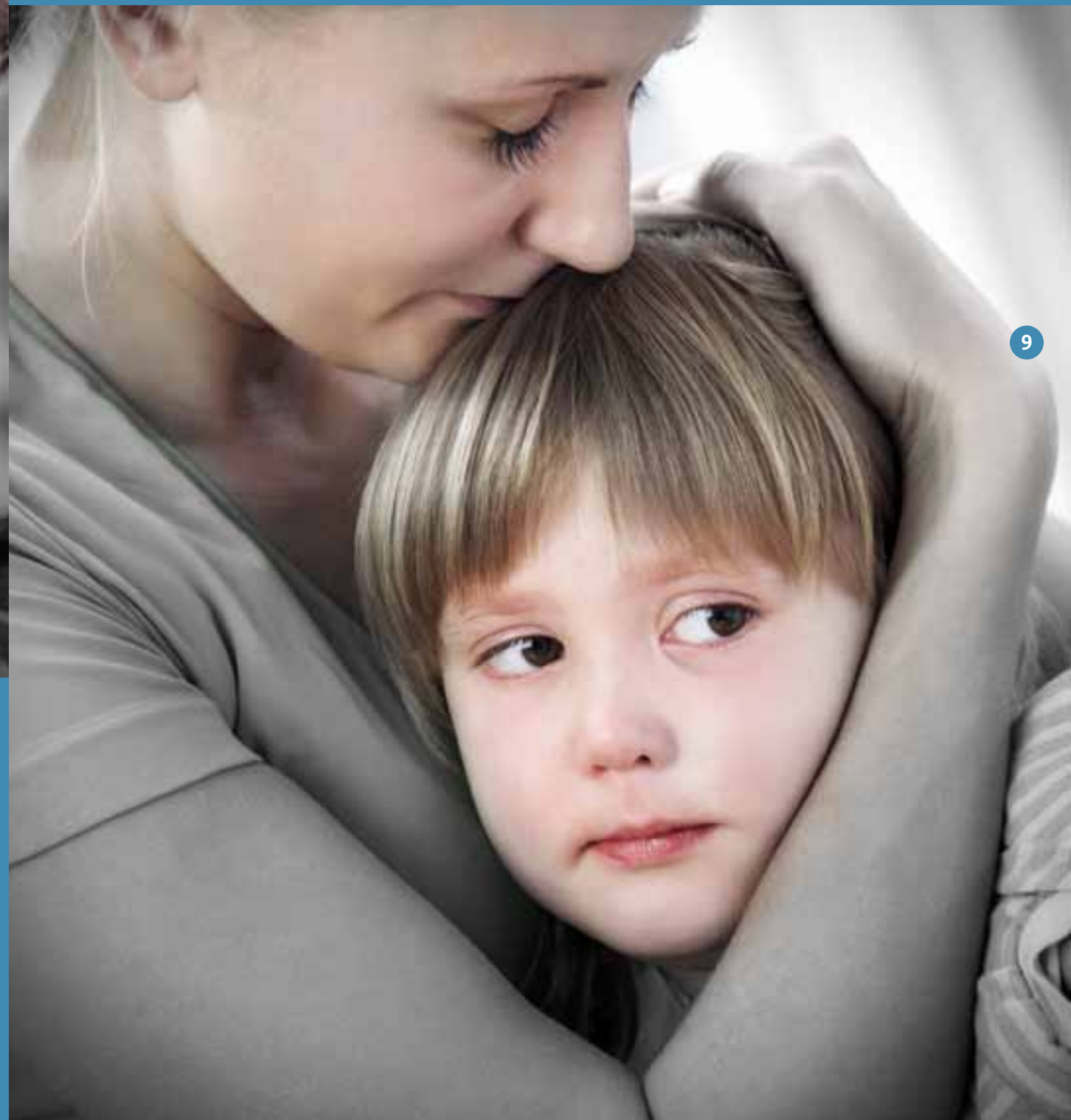
*...and to overcome substance
abuse and addictions...*



7



*...and help all families emerge
healthier and stronger.*



*...help families escape torture
in their homeland and
build new lives in Nebraska...*

*The programs of Lutheran Family Services
of Nebraska grow as the needs of our
communities change and grow...*



*In 2010,
Lutheran Family
Services of Nebraska
moved forward
in several
significant areas...*

Centers for Healthy Families



12

13

Janae Austin & her baby girl Jaylah

Lutheran Family Services of Nebraska opened a third Center for Healthy Families in North Omaha, consolidated and expanded services in Fremont, and expanded therapies for children at the Pottawattamie County Center for Healthy Families.

- **In North Omaha**—over 250 families are enrolled, with 80% pregnant or parenting teens. 46 of those teen parents graduated from high school in 2011.

- **In Fremont**—The **Rupert Dunklau Center for Healthy Families** was dedicated, consolidating two LFS offices . . . Children Services and Behavioral Health Services . . . at the site of the original Fremont orphanage.
- **In Pottawattamie County**—The Center, which has been in operation over ten years, added specialized therapies for children traumatized by sexual abuse. RSafeSM therapists work to heal the entire family.

Adoption Links Worldwide became an affiliate of LFS

14



Combining the strengths of two organizations with 136 years of experience created a powerful continuum of resources for children, from pre-birth to post-adoption and beyond. The affiliation of Adoption Links Worldwide with LFS brought a wealth of benefits, including an exclusive Nebraska partnership with **Wendy's Wonderful Kids** (WWK). WWK is a signature program of the Dave Thomas Foundation, which aggressively seeks loving and permanent homes for foster children.

15



With Adoption Links Worldwide came the amazing Forever Families Guild, a group of 65 passionate volunteers who are on a mission to help thousands of children and families in our community. The Guild is changing lives, one project at a time.

The **At Ease**SM program received national attention



16



Senator Bob Kerrey, Medal of Honor recipient and survivor of post-traumatic stress disorder, called **At Ease**SM a “force [of love] – that can be applied to the damaged hearts and souls of our returning veterans.” Senator Chuck Hagel also endorsed **At Ease**SM, saying “Local public-private partnerships could be the quickest and most compassionate way to get veterans the help they need.”

New populations



17



Lutheran Family Services provides support, guidance and empowerment to Nebraska's newest neighbors so they may attain self-sufficiency in their new country and be reunited with their loved ones.

The Battle on the Home Front



18

BEHAVIORAL HEALTH CASES - 6,913

Annie* clings to her “soldier” doll for dear life. She won’t let it out of her sight. She’ll barely let it go to put on her pajamas. The smiling doll in camouflage may not be what every little girl dreams of playing with, but for Annie, it represents the person she can’t always run to for hugs anytime she wants. At seven years old, Annie is beginning to understand all too well that when her daddy goes to work, he may not come home.

It’s not easy being the child of a hero.

As Annie began to withdraw more and more, her mother became increasingly concerned. Annie didn’t want to play with her friends anymore. She didn’t want to talk. Her grades were dropping. She began exhibiting signs of anxiety, stress, depression – even post-traumatic stress disorder. Very grown-up conditions that should not even be on the radar of a second-grader.

But for many military families, this is the reality of life during a time of war and the repeated deployments of an all-volunteer force. These are the battles on the home front.

In Annie’s case, her mother sought treatment from therapists who specialize in early childhood behavioral health and trauma, as well as the unique needs of the military child.

*Not her real name

19

Behavioral Health programs build and strengthen individual, family and community life by providing therapeutic services to individuals and families. Successful therapies improve the client’s relationship to his or her family. These therapies also improve the client’s ability to cope with crisis, daily problems and the symptoms of his or her illness.

Counseling cases - 2,580.... Substance Abuse cases & evaluations - 2,171.... Medication Management cases - 609.... Urgent Care - 377.... Community Support - 259.... Juvenile Pretrial Diversion - 143.... Crisis Response - 132.... Emergency Community Support - 120.... At EaseSM - 84.... Partners in Empowerment and Recovery (PIER) - 78....



Diapers and Diplomas

20

Young mothers and their babies working on goals together. For one this may be learning to crawl. For the other it may be filling out college applications. This is the reality of daily life at the North Omaha Center for Healthy Families, a program of Lutheran Family Services of Nebraska (LFS). In 2011, program participants graduated from five different high schools. In addition to managing grades, class time and finals, these graduates also had to deal with dirty diapers and temper tantrums. But because of the support they received, their education goals now seem realistic and attainable.

Nikita* says she likes the workers at the Center. She doesn't feel "judged" because of her situation. Instead, she's encouraged—to be a confident parent, to be a successful student—to work towards the day when she will be able to provide for herself and her child, and be able to give back to someone else. Perhaps someday she will even help another young woman in her situation.

Each participant and child is at the heart of the work at the Centers for Healthy Families. The North Omaha location is the third location for LFS – the others are in Fremont and Council Bluffs – but North Omaha is the only one that focuses primarily on teen parents. Approximately 80% of those served at the North Omaha Center are under 19 years old, both moms and dads – 250 families total, with room for about fifty more.

The purpose at every Center is to reduce the stress and isolation of parenting a young child and ultimately reduce the incidences of child abuse and neglect. And in North Omaha – the hope goes even deeper. Omaha City Councilmember Ben Gray believes that one family at a time, the Center can help transform area neighborhoods.

"At the end of the day, we think this is going to solve some very serious problems," Gray says.

*Not her real name

21

CHILDREN SERVICES CASES - 4,580

Children Services promotes healthy family behaviors through parent education and support, family and community awareness, and developing forever families for newborns and children who are in foster care. LFS' three Centers for Healthy Families, in North Omaha, Fremont and Council Bluffs, served 1,100 children aged five and under in 2010.

Centers for Healthy Families (Fremont, Council Bluffs & North Omaha) - 2,391.... **Right turn - 894....** **Maternal Health Care - 412....**
Sexual Abuse services - 358.... **Adoption services - 188....** **In-Home/Safety services - 110....** **Foster Care - 97....** **Pregnancy Counseling - 56....**

Life's Unexpected Detours



Su Reh with daughter Marry Meh

Su Reh was being helpful the night that he lost his legs. Su Reh lives in Omaha, but commutes weekly to work in St. Joseph, Missouri. One day last December, he accidentally picked up someone else's work keys as he left his job at the packing plant. After arriving back in Omaha, he discovered the keys, felt terrible about his mistake and chose to drive the 134 miles back to St. Joseph to return them.

It was an icy night. Su Reh was 20 miles outside of St. Joseph when his car skidded on black ice and slid through a guard rail. The state patrol said it was truly a miracle that they found him alive.

Su Reh survived, now facing life as a double amputee as well as a husband, a father of two, and a Karenni refugee from Burma. Su Reh—a young man in his early twenties—still has much life ahead.

While Su Reh lay in a hospital bed in Kansas City, the LFS International Center of the Heartland (ICH) began assisting his family with the complicated coordination of recovery. When Su Reh returned to Omaha, he began working with ICH practicum student Jacquelyn Moser. With Jacquelyn's help and intervention, Su Reh received prosthetic legs and now walks with a cane. He plans to find a new job in Omaha so he can continue to support his family.

According to Carol Cleaver, Director of Community Services, "Su Reh's story is just remarkable. It's the story of how one refugee's perseverance combined with culturally competent case management services has beaten the odds. Working together, a horrific situation has turned into a future of hope for Su Reh and his family."

COMMUNITY SERVICES CASES - 2,073

Community Services programs provide high quality direct and supportive services for our newest community members – immigrants, refugees, secondary migrants and asylees. The programs offer support, guidance and empowerment to guide these new citizen-hopefuls to self-sufficiency.

Immigration Legal Services cases - 665....

International Center of the Heartland cases - 512.... Refugee Services cases - 476.... Employment First cases - 420....

Programs & Services

BEHAVIORAL HEALTH SERVICES

Individual, Group and Family Mental Health Therapy

At EaseSM (trauma treatment and therapeutic support for active military, veterans and their loved ones)

Support/Therapy Groups

Alcohol/Substance Abuse/Addictions
Assessment, Treatment and Aftercare

Psychiatric Evaluation/Medication Management

Urgent Outpatient Counseling

24 Community Support, including Emergency Response

Emergency Community Support

Gambling Addiction Counseling

Mobile Crisis Response Teams (Douglas, Dodge & Washington Counties)

Josiah Place (North Platte housing for those with persistent mental illness)

Anger Management

COMMUNITY SERVICES

Refugee Services

Immigration Legal Services

International Center of the Heartland
(A collaboration with United Way of the Midlands, Catholic Charities, Legal Aid of Nebraska and One World Community Health Centers)

Employment First

AmeriCorps



CHILDREN SERVICES

Infant, Identified, International
& Foster Child Adoption Services

Pregnancy Counseling

Adoption Links Worldwide affiliation (Hague Accreditation)

Adoption Search Services

Foster Care / Wendy's Wonderful Kids

Early Childhood Mental Health Therapy

Respite Care

In-Home/Safety Services

Community Treatment Aide

Centers for Healthy Families - Fremont, Pottawattamie County & North Omaha (early intervention & prevention services for parents with children prenatal to age 5)

North Omaha Initiatives (teen parenting, fatherhood support, adolescent mental health therapy to age 21)

Maternal Health Care

Treatment for Children and Families Affected by Child Sexual Abuse (RSafeSM)

Parents United Against Child Sexual Abuse Support Groups

Parent Education and Support

Right turn (help for post-adoptive & guardianship parents - a collaboration with Nebraska Children's Home Society)

KidSquad (help for behaviorally-challenged young children in daycare settings and their families)

Early Childhood Services (Building Bright Futures)

Family Support Liaison Program (a partnership with the Learning Community of Douglas and Sarpy Counties)



Financial Summary

Lutheran Family Services of Nebraska & Affiliates* for the year ended December 31, 2010

REVENUE & SUPPORT

Lutheran Church-Missouri Synod, Nebraska District	174,420	■
Evangelical Lutheran Church in America, Nebraska Synod	202,308	■
Individual Contributions	2,057,396	■
Private Grants	1,722,686	■
Government Grants	2,338,816	■
United Ways	702,896	■
Program Service Fees	3,182,203	■
Purchase of Service Contracts	4,736,846	■
Investment & Other Revenue	110,839	■
SUBTOTAL	15,228,410	

EXPENDITURES

Behavioral Health Services	5,771,945	■
Children Services	3,284,294	■
Community Services	2,576,373	■
Affiliates*	757,717	■
Administration	1,591,132	■
Resource Development & Public Relations	678,324	■
SUBTOTAL	14,659,785	

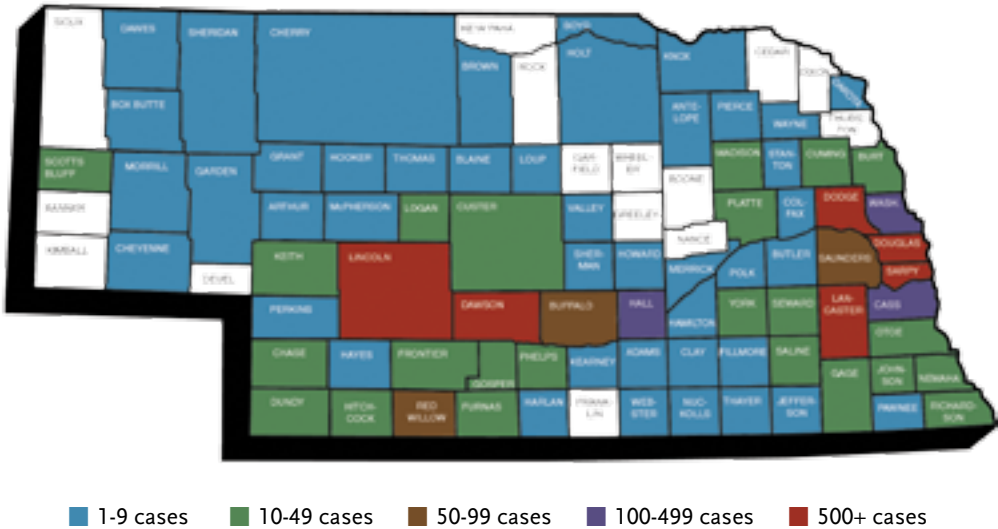
CHANGE IN NET ASSETS 731,544

* Affiliates include Lutheran Family Services Foundation, Omaha Church Center and Adoption Links Worldwide

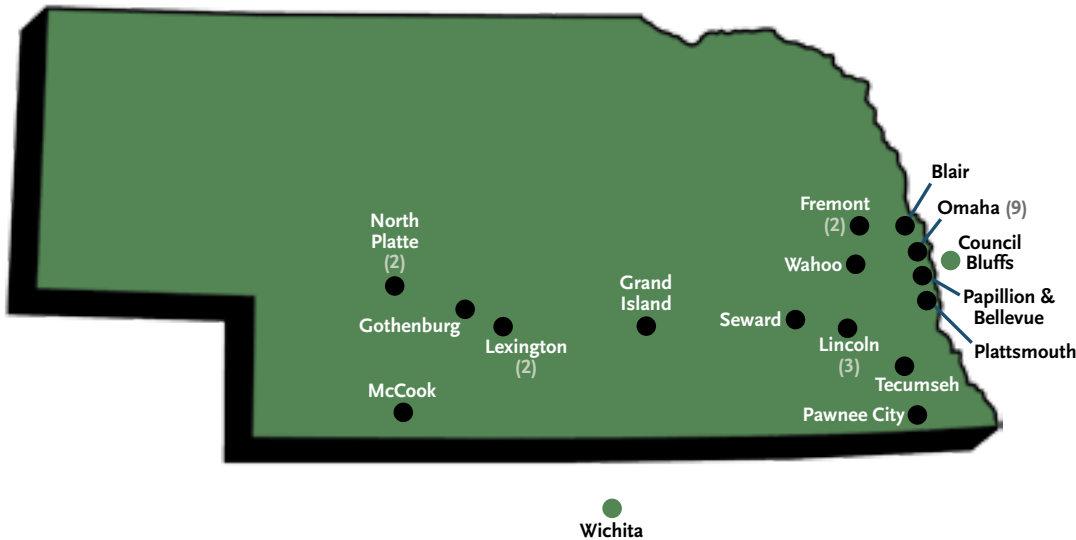
Fast Facts

- Only one of every 10 LFS clients is Lutheran. (13.3%)
- 85 cents of every dollar of income goes to support programs and services.
- As of June, 2011 – LFS staff members speak 28 languages and dialects.
- One-third of LFS clients are younger than 21. (34.7%)
- Of LFS clients asked, 94% would recommend LFS to other people.
- Three-fifths of LFS clients report an income of \$20,000 or below. (59.2%)
- Four-fifths of LFS clients have a high school diploma or below. (81.4%)

CASES BY COUNTY



OFFICE LOCATIONS



Board of Directors

2011 LFS BOARD OF DIRECTORS

Executive Committee

Gaye Lynn Schaffart	Chair
Thomas Tonniges, M.D.	Vice Chair
Peter W. Zandbergen	Chair, Finance/Audit Committee & Treasurer
Renee Tewes	Chair, Governance Committee
Amy Peck, J.D.	Chair, Program Committee

Rev. Dr. David deFreese Bishop, Nebraska Synod

Stuart J. Dornan
Gwendolynn F. Edwards
Bradley D. Holtorf
Gregg H. Johnson
Dan Mauk

Kenny Rocker
T. Parker Schenken
Rev. Carlos Schneider
Rev. Russell Sommerfeld President, Nebraska District

2011 LFS FOUNDATION BOARD

Gregg H. Johnson	Chair
Larry Novicki	Vice Chair
Phyllis Choat	Secretary
Richard Zolnosky	Treasurer
Terry McClain	
Andrew Morrow	
Greg Schilling	
Rodney Vandeberg	

2011 OMAHA CHURCH CENTER BOARD

Edwin D. Schoening	Chair
Herb Barelman	
Gaye Lynn Schaffart	
Thomas Tonniges, M.D.	
Peter W. Zandbergen	

2011 JOSIAH PLACE, INC. BOARD

Craig Stirtz	President
Edwin D. Schoening	Vice President
L.H. "Rick" Kolkman	Secretary
Richard Henrichs	Treasurer
Cindy Nieves	

Executive Team

Ruth Henrichs	President & CEO
Steve Peterson	Vice President of Administrative Services
Amy Richardson	Vice President of Program
Ruth Henneman	Vice President of Development
Richard Henrichs	Vice President of Finance

This publication was produced by the staff of Lutheran Family Services of Nebraska

Bev Carlson	Director of Public Relations
Jeff Jensen	Creative Design Manager

We invite you to support the work
of Lutheran Family Services.
For more information about programs,
to volunteer or to make a charitable gift, visit

www.LFSneb.org

call (402) 342-7038 or email info@LFSneb.org



Lutheran Church - Missouri
Synod, Nebraska District
Recognized Service Organization



Evangelical Lutheran
Church in America,
Nebraska Synod Affiliate



Lutheran Services
in America Affiliate



Accredited by the
Council on Accreditation



United Way Affiliate

Greetings to you!

What an amazing year 2010 was for Lutheran Family Services of Nebraska!



Thank you, our supporters and encouragers, for sharing blessings that have allowed us to continue our mission to serve all of God's people. The past twelve months have been a powerful testament to the impact of combining a strategic vision with a deep desire to build and strengthen families in the Heartland.

We hope that as you read through the stories in this Annual Report, you were able to share our joy in changing lives, one child – one family at a time.

What began with young German and Swedish pastors and deaconesses seeking homes for orphaned children has evolved into a full spectrum of human care for individuals, children and families. As community needs have changed, so too have our services...

- In the wake of war, **At EaseSM** provides treatment and peer support to returning veterans and their families.
- As more is revealed about the root causes of sexual abuse, new programming works with children who act out sexually.
- Teenage fathers have a mentor at the North Omaha Center for Healthy Families. A new Fatherhood Specialist teaches and coaches the message that "real men take care of their children."
- And just recently, amid growing concern over truancy issues, the Learning Community of Douglas and Sarpy Counties chose LFS to manage a new Family Support Liaison program providing outreach to those families

We invite you to join LFS as we celebrate a milestone of 120 years of service in 2012.

The organizations that evolved into Lutheran Family Services began their ministries in 1892; a mere 25 years after Nebraska became a state. The LFS

history of service reflects the changing human care needs of our communities. We look forward with great excitement to our next 120 years of service!

Thank you for traveling with us on this journey of human care ministry!

Blessings to you,

A handwritten signature in blue ink, reading "Ruth A. Henrichs".

Ruth A. Henrichs
President & CEO

A handwritten signature in blue ink, reading "Gaye Lynn Schaffart".

Gaye Lynn Schaffart
Chair, 2011 LFS Board of Directors





Mission

Lutheran Family Services expresses God's love for all people by providing quality human care services that build and strengthen individual, family and community life.

Vision

Lutheran Family Services of Nebraska will be the organization of first choice by clients, professionals, funders and donors for behavioral health and human care services based upon the organization's high quality of service, fiscal integrity and faith based mission and values.

 **Lutheran Family Services**
of Nebraska, Inc.

124 South 24th Street, Suite 230, Omaha, NE 68102

www.lfsneb.org

Pictured: Shawn Brown & his boy Jayden