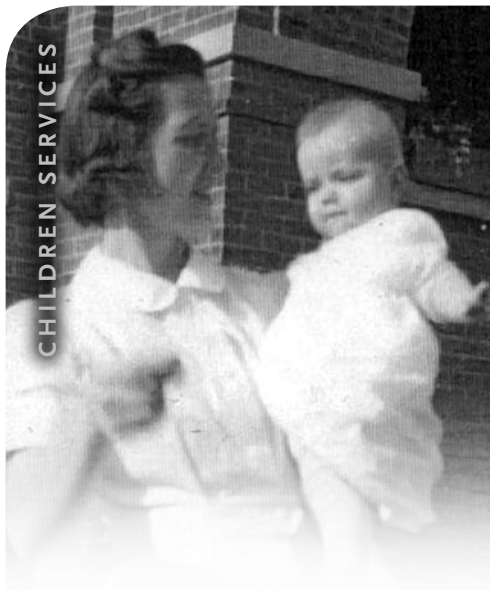


CHILDREN SERVICES



BEHAVIORAL HEALTH



COMMUNITY SERVICES



TIMES CHANGE ~ HOPE ENDURES

120 Years of Service 1892-2012



MISSION

Lutheran Family Services expresses God’s love for all people by providing quality human care services that build and strengthen individual, family and community life

2

VISION

Safety, Hope & Well-being for All People



Pre-1890

Lutheran Family Services of Nebraska History →

Historical Events →

1867–
Nebraska
statehood



1878–Thomas Edison
patents the cylinder
phonograph

1885–Statue of Liberty
arrives in New York Harbor





TIMES CHANGE. HOPE ENDURES.

“Will you help me?”

For over 120 years, the answer has been, “Yes!”

YES! We will help you leave foster care and find a permanent home.

YES! We will help you and your family heal from the trauma of child sexual abuse.

YES! We will help you and your family recover from the after-effects of war and deployment.

YES! We will help you and your family make a new life here in the U.S., safe from the violence of your homeland.

YES! We will help you find hope!

Times have changed since 1892, but at Lutheran Family Services (LFS), the willingness to spread safety, hope and well-being to all people has never changed.

On any given day, Lutheran Family Services has open case files on thousands of children and adults. Each one, in his or her own way, is looking to heal and re-enter the stream of daily life in a healthier way.

And every day, they are finding that path, with guidance from dedicated LFS caseworkers, counselors and therapists.

As one client said, “You saved my life. Lutheran Family Services saved my life.”

What can be more rewarding than knowing that someone found safety and hope because staff at LFS got up and went to work that day?

3



1890

1892-1893—The founding of Lutheran Family Services of Nebraska. A temporary orphanage is opened at Trinity Lutheran Church in Fremont and Immanuel Lutheran Church in Omaha begins caring for orphans.



1893—W.L. Judson receives patent for the zipper



1896—First modern Olympic Games

1898—Spanish-American War begins & ends





CHILDREN SERVICES

Three-year-olds have a lot of energy. No question about that. But usually, they eventually wind down. Usually.

For Casey*, there was no “off” button. His parents put him to bed at 8:00 pm, but on a normal night, he was still raring to go at 2:00 am.

His parents were exhausted. And increasingly worried. They knew something was wrong, but what could be wrong in a child so young? Soon, a tired but wound-up Casey began destroying and stealing things, cutting his hair and provoking other children at preschool.

Casey’s parents and preschool teacher knew something had to be done.

They contacted Lutheran Family Services (LFS). An early childhood behavioral therapist was able to see what Casey’s parents and teachers could not.

Casey was an incredibly stressed child who, because of previously undiagnosed medical trauma as an infant, never learned to rest or relax. Ever. So as the therapist began to work with the family, things began to change quickly. Within a few weeks, Casey was sleeping through the night, his social and emotional skills became more age-appropriate, and he was able to handle transitions at school without problems.

Today, his mother says he’s having the best kindergarten year ever. She believes the year would have been much different without early intervention from LFS. “I don’t even want to think about what it could have been like five or eight years from now, if we had not addressed this today,” she says. “Medication would have been just the beginning.”

4



1900

1901—Immanuel Children’s Home is established on the campus of the Immanuel Deaconess Institute, Omaha.

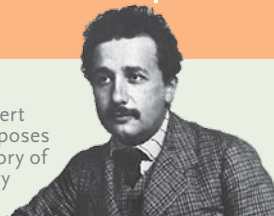


1902—Willis Carrier designs first modern air conditioning system



1904—U.S. construction of Panama Canal begins

1905—Albert Einstein proposes Special Theory of Relativity



1907—Auguste & Louis Lumière first market color photography



Children’s Behavioral Health is just one recognized expertise within Children Services. In 2012, LFS Children Services organized for the future by realigning all programs into three key areas:

- Children’s Behavioral Health;
- Permanency & Well-Being; and
- Prevention & Early Intervention Programs.

Children’s Behavioral Health includes the RSafe® program which provides trauma treatment and therapeutic support to children and families impacted by child sexual abuse. In 2012, Project Harmony invited LFS into its expanded offices at 119th & Q Streets in Omaha. Now, twelve RSafe® staff members are one door away from families dealing with crisis. In 2012, RSafe® therapists worked with 244 boys and girls at Project Harmony and from LFS offices in Council Bluffs and Lincoln.

Permanency & Well-Being includes foster care, adoption, foster child adoption (*Wendy’s Wonderful Kids— a signature program of the Dave Thomas Foundation for Adoption*), adoption search and, new this year – permanency planning. As Nebraska struggles with the future of its child welfare system, 19-year-olds continue to age out of the system with little more than the clothes on their backs and often no base of support. Half are homeless within two years. With the new permanency planning program,

counselors seek committed individuals and families willing to become a stable force in the life of a young person.

Prevention & Early Intervention Programs continue to have a dynamic impact on the future of our communities by giving children and their parents a better opportunity at a stable and healthy life. The three Centers for Healthy Families in North Omaha, Council Bluffs and Fremont, served 1,671 children in 2012 – providing research-based parenting education, ongoing support and incentives all designed to reduce the risk factors for child abuse and neglect. In May of 2012, 30 of the teenage parents in the North Omaha Center earned their high school diplomas and most are now pursuing secondary education.

The Learning Community Family Liaison Program also had tremendous success during its second year of operation. The 12 LFS liaisons in Omaha schools are providing case management support to families to remove barriers to learning, especially for elementary school students. Barriers have been as simple as a child needing reading glasses, to more complex issues – like the child whose family was hungry and two days from homelessness. In every case, the Family Liaison works to take down the barriers which prevent a child from learning.

At LFS, the goal is safety, hope & well-being for all children.

* Identifying information changed to protect confidentiality



1910



1914—
WWI
begins



1917—
U.S.
joins
WWI



1919—
Prohibition
becomes
law in U.S.



BEHAVIORAL HEALTH

Here, the difference can be life or death.

Timely mental health intervention matters. The evidence becomes more prevalent every day. A severely depressed woman neglects her toddler. A traumatized veteran withdraws from his family, hypervigilant, while hidden wounds of war rage deep inside.

A mentally ill teenager finds a gun and kills classrooms of first-graders before turning the gun on himself.

Such tragedies and the horrifying aftermath of recent explosions of violence underscore the need for an immediate response to a cry for help. Families struggle with the unanswered questions left behind as a loved one becomes a statistic. In 2012, suicide quietly remains one of the leading causes of death for adults in the United States.

Sadly, one of the greatest challenges facing people in mental health crises is the lack of access to timely assistance.

Within its wide-ranging Behavioral Health programming, Lutheran Family Services of Nebraska (LFS) works diligently on the frontlines, providing counseling and therapy for families and individuals. Addicts, alcoholics and gamblers find treatment and peer support. LFS therapists are specially-trained to diagnose mental health and substance abuse disorders and establish effective medication management.

Far away from the headlines, life-saving work is happening every single day.

Experts say more than one in every four American adults (26.2%) suffers from a diagnosable mental health disorder. Despite limited resources, Lutheran Family Services strives to help those in crisis as quickly as possible, especially those without access to adequate health insurance. The LFS Urgent Care Program provides emergency mental health interventions to adults within 24 to 48 hours, providing stabilization to those who might otherwise face a six-week wait for services.

In 2012, LFS expanded its commitment to active military, veterans and their families served through **At Ease**[®]. This program provides confidential trauma treatment and therapeutic support to those dealing with post-traumatic stress or other conditions related to repeated deployments. Through offices in Bellevue and Grand Island, therapists served 152 clients and made plans to expand services to North Platte and Lincoln.

Thanks to a United Way of the Midlands supplemental grant, LFS installed and implemented a central intake system. Now those seeking help may simply call one phone number. Central intake is a tremendous tool to streamline and expedite access for those who urgently need us the most.

Lives are saved every day. Safety, hope and well-being preserved.

6



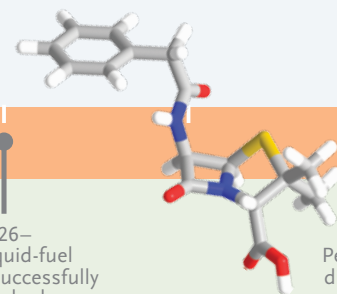
1920



1922—
Lincoln
Memorial is
dedicated



1926—
First liquid-fuel
rocket is successfully
launched



1928—
Penicillin is
discovered



COMMUNITY SERVICES

Annabella's* young life so far has been pretty confusing and painful. When she arrived at Lutheran Family Services of Nebraska's International Center of the Heartland, caseworkers guessed her age at about eighteen. Maybe nineteen. Although she speaks fluent Spanish, Annabella can't read and has only a first-grade education.

She does know she's not in Nebraska by choice. She is a victim of sex trafficking. **A family member sold her**, then smuggled her into the United States where she was forced to work. Broken-hearted and alone, she just wanted to get back home to her newborn baby.

Fortunately for Annabella, her case captured the attention of the local authorities, who contacted Lutheran Family Services (LFS) for assistance. LFS staff members harnessed community resources and provided trauma treatment to help her start processing the years of trauma she had experienced.

Working with human trafficking victims is the newest area of expertise within Community Services. 2012 was also the year that Community Services exceeded its goals – not only for the number of refugees resettled, but also for the number of corporations, organizations, churches and volunteers involved in the resettlement process.

For hundreds of families, Nebraska marks the beginning of the new life they've dreamed of – sometimes for decades. They come from all over the world, from tent camps in Asia or conflict in

Africa. Wherever there is unrest in the world, a refugee population is sure to follow. And word gets around – all the way around the world – that Nebraska is a welcoming place to call home.

Lutheran Family Services (LFS) is the largest resettlement organization in the state, resettling about 500 refugees each year through offices in Omaha and Lincoln. LFS' talented and dedicated staff provides a continuum of support for these refugee families, from resettlement and acculturation, to the ongoing quest for self-sufficiency offered through the International Center of the Heartland (ICH).

Over 1,200 clients received help at ICH in 2012 – guidance with finding stable employment, health care, community connections, affordable housing, legal aid – and most importantly, English classes. ICH also assists immigrants, asylees, and secondary migrants (those resettled elsewhere). Immigration Legal Services are offered in Omaha, Grand Island and Lexington.

Through Community Services, LFS also operates one of the largest AmeriCorps programs in the state, and in 2012 was awarded a Volunteers in Service to America (VISTA) sponsorship to support veterans' outreach.

One by one, day by day – providing safety, hope and well-being – to those who need it the most.

** Identifying information changed to protect confidentiality*



1930

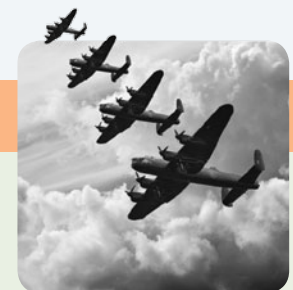


1930–Empire State Building construction starts (completed 1931)

1934–Immanuel Deaconess Institute in Omaha introduces foster parent program.



1936–Jesse Owens wins four gold medals in Berlin Summer Olympics Games



1939 – WWII begins

PROGRAMS & SERVICES

CHILDREN SERVICES (4,703 Cases)

PREVENTION & EARLY INTERVENTION PROGRAMS

- Centers for Healthy Families - North Omaha, Council Bluffs & Fremont (Prevention & early intervention services for parents with children prenatal to age five)
- Young Families Initiatives (Incentive-based programs for young parents)
- North Omaha Initiatives (Teen parenting, fatherhood support, mental health therapy to age 21)
- Maternal Health Care
- Learning Community Family Liaison Program (Under contract with the Learning Community of Douglas & Sarpy Counties, LFS works with at-risk families to reduce truancy & other barriers to learning & achievement)

PERMANENCY & WELL-BEING

- Pregnancy Counseling
- Adoption Links® (Infant & International Child Adoption Services)
- Adoption Search Services
- Foster Care
- Safety & In-Home Services
- Family Support
- Intensive Family Preservation
- Permanency Services
- Foster Child Adoption
- Wendy’s Wonderful Kids (LFS is the sole Nebraska partner of Wendy’s Wonderful Kids, a program of the Dave Thomas Foundation for Adoption that aggressively seeks permanency for youth in foster care)
- Right turn® (Help for post-adoption & guardianship parents -a collaboration with Nebraska Children’s Home Society)

CHILDREN’S BEHAVIORAL HEALTH

- Early Childhood Behavioral Health (Ages 0-5)
- Mental Health Therapy for Children & Youth, Including Trauma & Attachment Therapies
- Treatment for Children & Families Affected by Child Sexual Abuse (RSafe®)
- Parents United / Daughters & Sons United Against Child Sexual Abuse Support Groups
- KidSquad (Help for behaviorally-challenged young children in daycare & preschool settings & their families)
- Respite Youth Care
- Community Treatment Aides

8



1940

1943-1944—Professional social casework service begins. Lutheran Children’s Home headquarters moves to Omaha.



1941—Ted Williams is last player to end baseball season batting .400



1947—Raytheon builds world’s first microwave oven



1949—First nonstop around-the-world flight

BEHAVIORAL HEALTH (5,246 Cases)

- Individual, Group & Family Mental Health Therapy
- Alcohol/Substance Abuse/Addictions Assessment, Treatment & Aftercare
- Psychiatric Medication Management
- **At Ease**® (*Trauma treatment & therapeutic support for active military, veterans & their loved ones*)
- Anger Management
- Gambling Addiction Counseling
- Support Groups
- Urgent Outpatient Counseling
- Community Support
- Mobile Crisis Response Teams (*Douglas, Dodge & Washington Counties*)
- PIER / ACT / TASC (*Community support & case management for the severely mentally ill*)
- Adult Sex Offender Treatment
- Josiah Place (*North Platte housing for those with persistent mental illness*)

COMMUNITY SERVICES (1,858 Cases)

- Refugee Resettlement
- Refugee Employment & Education
- Immigration Legal Services
- International Center of the Heartland (*A collaboration with United Way of the Midlands, Catholic Charities, Legal Aid of Nebraska & One World Community Health Center*)
- Employment First
- AmeriCorps; Veteran Leaders Corps - Points of Light Institute / Volunteers in Service to America (VISTA)



1950



1958—Immanuel Children's Home in Omaha closes after 60 years. Emphasis shifts to foster parent program.



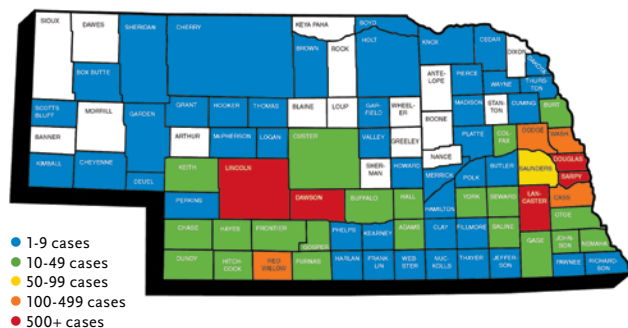
1953—First color TVs for sale

1954—First U.S. large-scale vaccination of children against polio

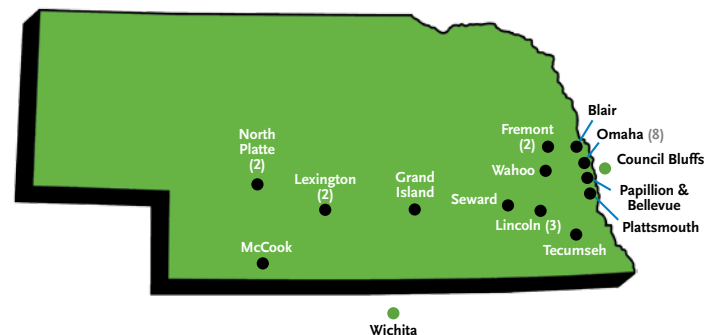


FAST FACTS

CASES BY NEBRASKA COUNTY 2012



OFFICE LOCATIONS



10

- One of every eight LFS clients is Lutheran.
- 81 cents of every dollar of income goes to support programs and services.
- As of February 2013, LFS staff members speak 13 languages and dialects.
- Served people living in 76 of 93 Nebraska counties, plus 10 counties in Iowa.
- 98.3% of LFS clients surveyed would recommend LFS to other people.
- 85% of LFS clients report an income of \$20,000 or below.
- 74% of LFS clients have a high school diploma or less.
- 44 LFS AmeriCorps members served 50,150 hours in programs serving military, refugee and low-income families.

1961—Lutheran Children's Home in Omaha closes. Family social work continues.



1960

1961—Construction of the Berlin wall begins



1963—Martin Luther King Jr. gives “I Have a Dream” speech



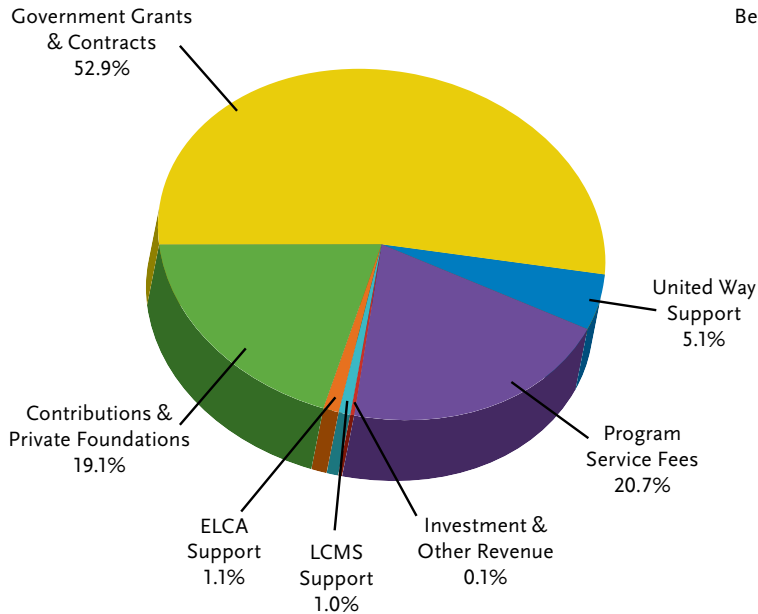
1969—Neil Armstrong walks on the moon



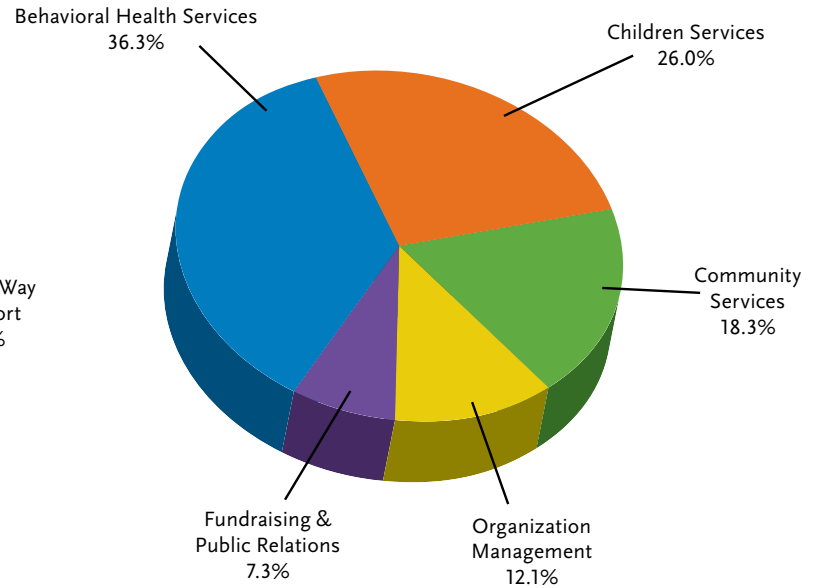
FINANCIAL SUMMARY

Lutheran Family Services of Nebraska, Inc.* for the year ended December 31, 2012

REVENUE & SUPPORT \$16,323,035



OPERATING EXPENSES \$16,265,246



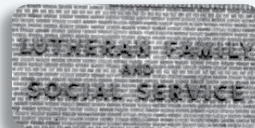
11

*Lutheran Family Services of Nebraska, Inc. has affiliate corporations including Lutheran Family Services Foundation, Inc. & Omaha Church Center, Inc. (the property holding and building management affiliate), with total combined net assets of \$13.4 million including investment and capital assets. In 2012, net assets for these affiliates increased by \$617,858.



1970

1971—Immanuel Social Service & Lutheran Family Service officially merge to become 'Lutheran Family and Social Service.'



1975—Refugee Resettlement Program begins.



1978—Chaplaincy services & volunteer hospital visitation programs begin.



MICROSOFT

1975—Microsoft is founded

1976—Viking I takes first color photographs of Mars surface



1979—Sony WalkMan is introduced

LEADERSHIP

LUTHERAN FAMILY SERVICES OF NEBRASKA, INC. BOARD OF DIRECTORS

Anthony Anderson
Linda Daugherty
Stuart J. Dornan
Gwendolynn F. Edwards
Debbie Fraser
Bradley D. Holtorf
Brian Maas
Andy Massey
Daniel S. Mauk

Amy Peck
Mary Reckmeyer
Kenny Rocker
Parker Schenken
Russell Sommerfeld
Kim Sucha
Renee A. Tewes
Peter W. Zandbergen

LUTHERAN FAMILY SERVICES FOUNDATION, INC. BOARD OF DIRECTORS

Phyllis Choat
Gregg H. Johnson
Terry J. McClain
Andrew Morrow

Larry Novicki
Greg Schilling
Richard Zolnosky

JOSIAH PLACE, INC. BOARD OF DIRECTORS

Richard Henrichs
L.H. “Rick” Kolkman
Cindy Nieves

Edwin D. Schoening
Craig Stirtz

OMAHA CHURCH CENTER, INC. BOARD OF DIRECTORS

*The property holding and building management affiliate
of Lutheran Family Services of Nebraska, Inc.*

Herb Barelman
Bradley D. Holtorf
Edwin D. Schoening

Kim Sucha
Peter W. Zandbergen
Ruth Henrichs

LFS EXECUTIVE TEAM

Ruth Henrichs
President & CEO

Steve Peterson
*Vice President of
Administrative Services*

Ruth Henneman
*Vice President
of Development*

Todd Reckling
*Vice President of
Children, Family &
Community Services*

Richard Henrichs
*Vice President
of Finance*

12

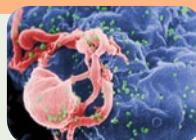


1980

1981—First
Space Shuttle
is launched



1983-4—
AIDS virus
is discovered



1984—Ruth Henrichs is named
President & CEO; Counseling
services begin in North Omaha.

1986—Adopts the name
'Lutheran Family Services
of Nebraska, Inc.' & installs
first computer system.



1989—
Berlin Wall
falls





ANNUAL REPORT 2012 PRESIDENT & BOARD CHAIR LETTER

Hope endures.

The world and its needs may shift over time, but hope endures. It simply must.

At Lutheran Family Services of Nebraska (LFS), we walk alongside people in need of a **reason** to hope. Whether it is a child languishing in foster care, or a family struggling to keep their child engaged in school, LFS therapists and case workers are there. Day after day, year after year.

Times change. Hope endures.

In 2012, Lutheran Family Services marked 120 years of providing compassionate human care.

As the Nebraska Legislature declared 2012 the “Year of the Child,” LFS staff focused on expanding and refining its services to children. We trained a record number of new foster parents, moved our RSafe® therapists into new offices convenient to Project Harmony, and continued to work with hundreds of families, one-on-one, at our three Centers for Healthy Families. And every single day, LFS Family Liaisons were in elementary schools breaking down barriers to learning. One child may have simply needed glasses, while another needed a safe home and hot meal.

Behavioral Health programs are creating stability within families and communities. Collaboration between law enforcement and therapists in Crisis Response is growing, and **At Ease**® services to veterans and their families have expanded to Grand Island, with plans to expand into North Platte and Lincoln.

In LFS Community Services programs – a record number of refugee families started new lives in safety and freedom, while we began the heartbreaking task of rescuing others from the trauma of human trafficking. Thousands more found a path to self-sufficiency at the International Center of the Heartland.

Times change. Hope endures. We invite you to join with us as we serve to make our vision of “safety, hope & well-being” a reality for all people!

Ruth Henrichs
President & CEO

Peter W. Zandbergen
Chair, LFS Board of Directors

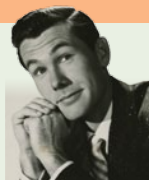


1990

1990—First Gulf War begins



1992—Johnny Carson retires from *The Tonight Show*



1991—Omaha “Dunklau Building” is purchased.

1992—LFS centennial is celebrated across the state.

1993–8—LFS conducts *Share the Hope* capital campaign, raising over \$5m.



1995—Privatization of Internet is completed, leading to massive growth of websites



1996—LFS first accredited by Council on Accreditation.



1997—First statewide computer network

1997—Google.com is launched



1999—LFSneb.org launches

2012 EVENTS



At Ease® Benefit Luncheon
feat. **Sal Giunta**
January 30, 2012
CenturyLink Center, Omaha



Fandango®
February 17, 2012
Champions Run, Omaha
(Right) Honorary Chairs: Kevin Jackson, Pamela Finn, Brandon Finn-Jackson & Tehra Finn-Jackson



These Are a Few of My Favorite Things
June 12, 2012
Fremont Golf Club, Fremont
(Left) Event Chairs
Linda & Terry McClain



Faith in Action® 120th Anniversary Celebration
August 16, 2012
Sandhills Convention Center, North Platte
(Below) The Ken & Aletha Huebner Family & Ted Huebner



Faith in Action® 120th Anniversary Celebration
September 16, 2012
Embassy Suites, LaVista
(Left, top two photos) The Dr. Tom & Jane Tonniges and Frank & Mary Bruning Family; (Left, bottom photo) The Marti Wilson Family

Omaha's Great Pumpkin
October 27, 2012
Village Pointe, Omaha



Wicker & Wine®
November 1, 2012
Mid-America Center, Council Bluffs, IA
(Left) Richard & Connie Vogelzang with Honorary Chairs
Lisa & Matt Gronstal

14



2001—The Rev. Reuben T. & Darlene M. Swanson Children Services Center opens in Omaha.



2004—International adoption & Building Families Boutique programs begin. Clifford L. Johnson Center for Healthy Families® building in North Platte acquired.

2007—United Way names LFS lead agency for the International Center of the Heartland; Josiah Place opens in North Platte; Fremont Boutique opens.

2009—Right Turn® & At Ease® programs created.

2001—9/11 terrorist attacks



2003—Saddam Hussein is captured



2005—YouTube is introduced



2008—Michael Phelps wins eight gold medals in a single Olympic Games



CONNECT WITH US

Gift Options

- Cash Gifts
- Bequests or Estate Gifts
- Gifts of Stock
- Gifts of Grain
- Donate Online
- Designate Thrivent Choice Dollars® to LFS
- Employer Matching Gifts

Engagement Options

- Volunteer as a group, at your workplace or church, to sponsor a refugee family
- Participate in a diaper drive or donate new items for children under five to the Centers for Healthy Families
- Join the "Forever Families Guild" or "Fremont Family Friends"
- Donate your professional skills to help a veteran or child aging out of foster care

Stay Connected with LFS

- Become a Facebook fan of Lutheran Family Services of Nebraska—facebook.com/LFSNEB
- Follow us on Twitter—[@LFSofNebraska](https://twitter.com/LFSofNebraska)
- Join our LinkedIn network—linkedin.com/company/lutheran-family-services-of-nebraska
- Subscribe to our YouTube channel—youtube.com/user/lfsneb
- Email us at info@LFSneb.org
- Sign up for email updates—www.LFSneb.org

When you share your email with Lutheran Family Services of Nebraska it allows us to send you important information, stories and community updates electronically. We are able to be better stewards of our resources by eliminating some printing and mailing costs.

15



2011—North Omaha Center for Healthy Families® opens.

2012—Services for victims of human trafficking begin; RSafe® moves to Project Harmony.

2011—Penn State child sex abuse scandal breaks

2012—Sandy Hook Elementary shooting



PHOTO CREDITS—Cover, lower half: iStockphoto/spfoto; iStockphoto/tobkatrina; ©UNHCR/S. Phelps. **Page 2:** (*Statue of Liberty*) Library of Congress, Prints & Photographs Division, Detroit Publishing Company Collection, Photo 4a23254u. **Page 3:** (*Omaha Building*) Immanuel Health Systems/A. Sandberg Gray's Studio, Omaha, NE. **Page 4:** (*Immanuel Children's Home*) Immanuel Health Systems, *Den Lille Barvånnen*, October 1906 issue; (*Willis Carrier*) Carrier Corporation 1915; (*Panama Canal*) Library of Congress, Prints & Photographs Division LC-USZ62-125093 DLC; (*Albert Einstein*) Lucien Chavan, 1904 or 1905; (*Biplane*) Paul Castelnau 1917, PD-BECAUSE. **Page 5:** (*Battleship*) *The War Illustrated*, 1 May 1915; (*US Declares War*) Harris & Ewing, 3 February 1917; (*Prohibition*) Vintage Periods, 1920-1933. **Page 6:** (*Goddard Rocket*) Esther C. Goddard, 16 March 1926 & Library of Congress, Prints & Photographs Division LC-USZ62-110433; (*Penicillin*) Cacycle/Wikimedia Commons. **Page 7:** (*Refugee with child*) ©UNHCR/H. Caux; (*Five children*) Immanuel Health Systems; (*Empire State Building*) Taken by Lewis Hine, edited by Durova, 1930; (*Jesse Owens*) Reproduction of photograph in *Die Olympischen Spiele*, 1936 p.27, author unknown, also Library of Congress, Prints & Photographs Division LC-USZ62-27663. **Page 8:** (*Ted Williams*) *Baseball Digest*, back cover, May 1949 issue, author unknown; (*Microwave*) Acroterion/Wikimedia Commons; (*Nonstop Flight*) U.S. Air Force, February 1949. **Page 9:** (*Postcard*) Immanuel Health Systems, from *Immanuel Centennial Book 1887-1987*, p.25. **Page 10:** (*Berlin Wall Construction*) U.S. National Archives, 20 November 1961; (*Martin Luther King, Jr.*) Marion S. Trikosko, 26 March 1964, Library of Congress, Prints & Photographs Division, dcu, LC-DIG-ppmsc-01269; (*Neil Armstrong*) NASA photo AS11-40-5886. **Page 11:** (*Microsoft logo*) Microsoft Corporation, PD-TEXTLOGO; (*Viking I*) NASA/JPL, 21 July 1976. **Page 12:** (*Space Shuttle*) NASA photo S81-30498; (*AIDS*) Centers for Disease Control/C. Goldsmith; (*Berlin Wall Hole*) Bundesarchiv, Bild 183-1990-0105-029/Reiche, Hartmut/CC-BY-SA. **Page 13:** (*Gulf War*) George Bush Presidential Library & Museum, author unknown, 1990; (*Johnny Carson*) ©CBS-Gabor, Rona, photographer, 1 May 1957; (*COA logo*) ©Council on Accreditation, 45 Broadway, 29th Floor, New York, NY 10006; (*Google Screenshot*) ©Intellectual property owned by Google, Inc. **Page 14:** (*9/11*) 010913-N-1350W-003 New York, N.Y., Sept. 13, 2001, U.S. Navy Photo by Photographer's Mate 2nd Class Jim Watson (RELEASED); (*Saddam Hussein*) U.S. Army photo, 2004-07-24, PD-USGOV-MILITARY-ARMY; (*YouTube logo*) Trademark of YouTube, LLC {{non-free logo}}; (*Michael Phelps*) White House photo by Eric Draper, 10 August 2008, PD. **Page 15:** (*Penn State*) Quintin3265/Wikimedia Commons; (*Sandy Hook*) Voice of America/Wikimedia Commons.

Lutheran Family Services *of Nebraska, Inc.*

124 South 24th Street, Suite 230
Omaha, NE 68102
(402) 342-7038
www.LFSneb.org

This publication was produced by the staff of Lutheran Family Services of Nebraska

Bev Carlson, APR
Director of Public Relations

Jeff Jensen
Creative Design Manager



Lutheran Church - Missouri
Synod, Nebraska District
Recognized Service Organization



Evangelical Lutheran
Church in America,
Nebraska Synod Affiliate



Lutheran Services
in America Affiliate



Accredited by the
Council on Accreditation



United Way Affiliate